



# EASY RELOCATABLE WEIGHING SYSTEM TYPE VMP-2

## Relocatable weighing system VMP-2

Vehicle weigher **VMP-2** is a easy relocatable weighing equipment designed for seasonal weighing. The equipment is used most often for control of material supply in building firms, or it can be used for checking of overloaded vehicles as well. Vehicles are weighed most effectively "in motion" when the vehicle drives steadily over the weighpads or can be weighed in "static mode", when each axle is stopped momentarily on the weighpads.

**VMP-2** - a couple of weighpads can be easily moved to another location - ideal for temporary weighing sites



Yáha - 401, HZC s.r.o. Jenež, deponie Praha-Holešovice

Soubory Váha | Bilance | Nastavení | Různé

S	Datum		Táara	Brutto	Netto	Jméno zákazníka	Akce	Náprava č.	Zařízení
		Bilance materiálů	18300	41700	23400			1	8550
		Bilance daňových dokladů	0	43100	0			2	8150
		Bilance zákazníků	17800	43100	25300			3	12450
		Bilance zákazníků - jednotlivě	0	42600	0			4	12450
	23.5.2002 1	Bilance dopravců	19450	42600	23150				
	23.5.2002 1	Bilance akcí - celkem	0	43800	0				
	23.5.2002 1	Bilance akcí - jednotlivě	0	43800	0				
	23.5.2002 1	Přehled zákazníků / dodavatelů	19850	43800	24950				
	23.5.2002 1	Přehled materiálů	0	32500	0				
	23.5.2002 1	Přehled dopravců	14250	32500	18250				
	23.5.2002 1	Přehled tár	0	42350	0				
	23.5.2002 10:58	1A16987 materiál	18250	42350	24100				
	23.5.2002 11:03	PJH3395 materiál	0	43450	0				
	23.5.2002 11:03	PJH3395 materiál	17800	43450	25650				
	23.5.2002 11:04	1S64668 materiál	0	39600	0				
	23.5.2002 11:04	PHN0243 materiál	18300	39600	21300				

Qalší vážení | Qprava záznamu | Zrušit záznam | Daňový doklad | Vážní listek | Konec

Vážný: Servis



Portable weighpad VMP-2

User software for control of material supply (in construction yards, sandpits, quarries, concrete production yards, waste dumps etc.) provides data management of vehicles and materials, automatic reporting of weighed material, invoice generation etc.

Agency in Poland:



**IMEX-BIS Sp. z o.o.**  
ul. Botaniczna 10  
60-586 Poznań  
tel.: (+48) 0 61 847 32 61  
fax: (+48) 0 61 847 30 36  
e-mail: [biuro@imex-bis.com.pl](mailto:biuro@imex-bis.com.pl)  
<http://www.imex-bis.com.pl>

Producer:



**TENZOVÁHY, s.r.o.**  
Brněnská 82, 779 00 Olomouc  
Czech Republic  
tel.: (+420) 585 428 186  
fax: (+420) 585 428 186  
e-mail: [info@tenzovahy.cz](mailto:info@tenzovahy.cz)  
<http://www.tenzovahy.cz>

## VMP-2 weighing system features

Vehicle weigher VMP-2 is a portable weighing equipment designed for seasonal weighing. The standard system consists of two weighpads, and evaluation system controlled by PC computer. Weighpads are laid into a steel frame to ensure proper levelling of pads with weighing zone. Weighpads can be easily disconnected and moved to another location as needed.

This system can be used for statistical axle and wheel load recording, checking for overloaded vehicles as well as for control of material supply. Vehicles can be weighed either in "static mode", with each axle stopped momentarily on the weighpads, or "in motion" (WIM) when the vehicle drives steadily over the weighpads. Vehicle axles are automatically detected, counted and processed immediately after the last axle leaves the pads. In static mode it can be used for loads checking up to 7,500 kg on each pad.

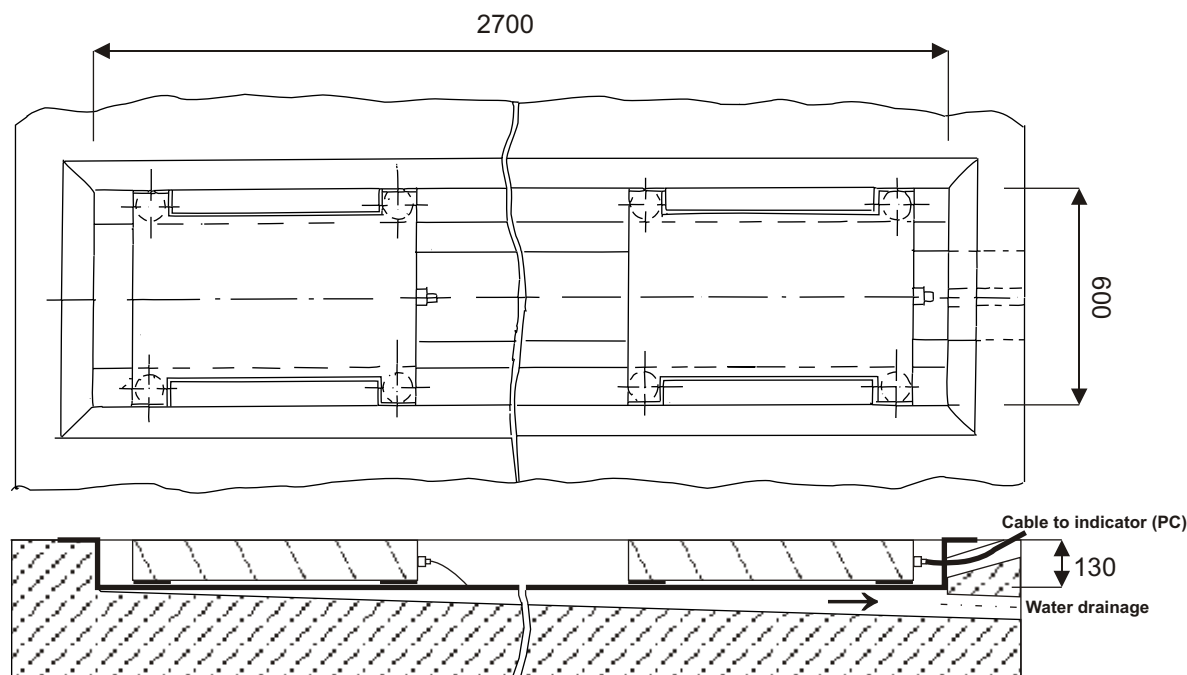
Software evaluation ensures not only the control of weighing process but provide also extensive data management, as for example vehicle and material recording, reports of weighed material, co-operation with company accounting or material supply system, etc.

## Technical specifications

• max. weighing capacity (per axle) $\max_1 + \max_2 = \max$	7 500 + 7 500 kg
• min. weighing capacity (per axle) $\min_1 + \min_2 = \min$	500 + 500 kg
• number of weighed axles	up to 16
• scale Interval "d" in WIM / in static mode (switchable)	50 / 10, 20, 50 kg
• max. vehicle speed for weigh-in-motion	4 kph
• min. vehicle speed for weigh-in-motion	1 kph
• accuracy class of weigh-in-motion according to OIML Tc9	2
• accuracy class of static weighing according to the direction 90/384/EEC	III
• weighbridge operational dimensions (consists of two weighpads)	2 500 x 600 mm
• weighpad weight	54 kg

## Installation of weighpads VMP-2 into the shallow ground frame

Weighpads are usually installed into the ground steel frame to ensure proper levelling with the weighing zone. Precise levelling is necessary to achieve desired weighing accuracy.



Agency in Poland:



IMEX-BiS Sp. z o.o.

ul. Botaniczna 10  
60-586 Poznań  
tel.: (+48) 0 61 847 32 61  
fax: (+48) 0 61 847 30 36  
e-mail: [biuro@imex-bis.com.pl](mailto:biuro@imex-bis.com.pl)  
<http://www.imex-bis.com.pl>

Producer:



TENZOVÁHY, s.r.o.

Brněnská 82, 779 00 Olomouc  
Czech Republic  
tel.: (+420) 585 428 186  
fax: (+420) 585 428 186  
e-mail: [info@tenzovahy.cz](mailto:info@tenzovahy.cz)  
<http://www.tenzovahy.cz>